



PURITY POOL

PRODUCT CATALOG



## Company History

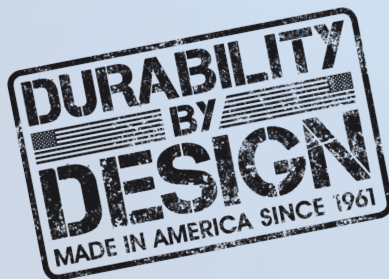
In 1951, Dick Gross (pictured on cover acid-washing a pool, circa 1970) was hired to clean an all-tile pool at the Kabat Kaiser Institute in Santa Monica, California. That began his career in the pool industry and in 1961 he founded Purity Pool Service. Unsatisfied with the products available at the time, he invented new tools with innovative designs that saved time and lasted longer.

By the mid 1980s, Purity Pool Service officially dropped the word "Service" from the name and fully transitioned to concentrating on making the most durable and efficient tools possible for the professional service trade.



A true family business, the company is now led by his son Rich Gross, President and General Manager; daughter Kate Boilon, Operations Manager; and wife Julie, Business Manager. Dick is still passionately involved in the development of new products, vowing to never retire!

Purity Pool products are proudly manufactured in our northern California plant. You can reach us at 800-257-1961 or via email at [info@puritypool.com](mailto:info@puritypool.com).



# SCOOPS & RAKES

## DESIGN FEATURES

- Super strong alloy and heat-treating process for maximum frame durability
- Enforcer handle maintains the integrity of the frame
- Tapered shape to hold in debris with low drag
- Rag bag, leaf chaser & silt nets empty with an easy flip of the wrist
- Triple stitched bags for maximum durability
- Turned leading edge for easy scooping—pioneered by Purity Pool in 1971
- Secondary panels to protect softer rag bag, leaf chaser and silt nets from snags and abrasion
- Straight sides to hug tile line

The Enforcer handle features a Y-shape support that relieves stress at the handle and distributes pressure along the frame. A special slot in the back provides easy access for replacement of the spring lock.

## BAG CONFIGURATIONS



**STANDARD:** Traditional blue mesh, rounded shape



**TUFF DUTY:** Extra durable black mesh, tapered design



**RAG BAG:** Easy-empty, soft black mesh with wear panel\*



**SILT:** Soft, superfine white mesh with wear panel\*



**LEAF CHASER:** Soft 1/4 in. open black mesh with wear panel\*

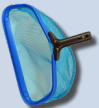
\*1/4" Open mesh wear panels protect the softer bag materials from wear and abrasion



## SPA SCOOP

Small, light and easily maneuvered in small areas

14" Super strong frame  
Two bag designs available  
(Silt shown)



**STANDARD**      16" DEPTH      ORDER CODE: SSSTD

Standard mesh bag. Blue bag provides excellent visibility of collected debris.



**SILT**      16" DEPTH      ORDER CODE: SSSLT

Superfine mesh bag gets fine particles (pollen, tiny bugs, etc.) Deep bag holds in debris. Secondary wear panel protects primary bag from abrasion.



# ULTRA-LITE

Lightweight, durable and economical

18" Strong lightweight frame  
Four bag designs available  
(Standard shown)



**STANDARD**

**16" DEPTH ORDER CODE: ULSTD**

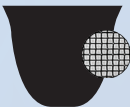
Standard mesh bag. Blue bag provides excellent visibility of collected debris.



**RAG BAG**

**20" DEPTH ORDER CODE: ULRB**

Soft bag with traditional size mesh empties with an easy flip of the wrist. Secondary wear panel protects primary bag from abrasion.



**TUFF DUTY**

**20" DEPTH ORDER CODE: ULTD**

Our toughest material withstands the most abuse without the need for an extra backing. Low drag traditional size mesh.



**SILT**

**20" DEPTH ORDER CODE: ULSLT**

Superfine mesh bag gets fine particles (pollen, tiny bugs, etc.) Deep bag holds in debris. Secondary wear panel protects primary bag from abrasion.



# FÈNIX

**Modular, with quick and easy replacement parts**

18" Strong lightweight frame

Three bag designs available



**STANDARD**

**16" DEPTH**

**ORDER CODE: FXSTD**

Standard mesh bag. Blue bag provides excellent visibility of collected debris.



**TUFF DUTY**

**16" DEPTH**

**ORDER CODE: FXTD**

Our toughest material withstands the most abuse without the need for an extra backing. Low drag traditional size mesh.



**SILT**

**16" DEPTH**

**ORDER CODE: FXSLT**

Superfine mesh bag gets fine particles (pollen, tiny bugs, etc.) Deep bag holds in debris.

# FENIX REPLACEMENT PARTS

Replacement bags slide quickly & easily over frame



## Standard Bag

Soft, traditional blue mesh  
Order Code: RNFXTD



## Tuff Duty Bag

Stiff, durable black mesh  
Order Code: RNFXTD



## Silt Bag

Superfine white mesh  
Order Code: RNFXTD



## FENIX Leading Edge

Durable rim snaps on and off easily  
Order Code: LEFX



## Enforcer

### Handle for FENIX

Order Code: RHFX



## Spring Lock

Top quality replacement  
fits most service tool handles  
Order Code: SL



# Phantom



**Modular, with quick and easy replacement parts**

19" Strong lightweight frame

Three bag designs available

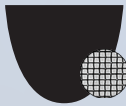


**RAG BAG**

**16" DEPTH**

**ORDER CODE: PHRB**

Soft bag with traditional size mesh empties with an easy flip of the wrist. Secondary wear panel protects primary bag from abrasion.



**TUFF DUTY**

**16" DEPTH**

**ORDER CODE: PHTD**

Our toughest material withstands the most abuse without the need for an extra backing. Low drag traditional size mesh.



**SILT**

**16" DEPTH**

**ORDER CODE: PHSLT**

Superfine mesh bag gets fine particles (pollen, tiny bugs, etc.) Deep bag holds in debris.

# PHANTOM REPLACEMENT PARTS

Replacement bags slide quickly & easily over frame



## Rag Bag

Soft, traditional black mesh  
Order Code: RNPHRB



## Tuff Duty Bag

Stiff, durable black mesh  
Order Code: RNPHTD



## Silt Bag

Superfine white mesh  
Order Code: RNPHSLT



## PHANTOM Leading Edge

Durable rim snaps on and off easily  
Order Code: LEPH



## Enforcer

### Handle for PHANTOM

Order Code: RHPH



## Spring Lock

Top quality replacement  
fits most service tool handles  
Order Code: SL



# CATCH-22

**Modular, with quick and easy replacement parts**

22" Strong lightweight frame

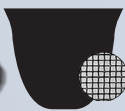
Two bag designs available



**RAG BAG**

**20" DEPTH ORDER CODE: CTRB**

Soft bag with traditional size mesh empties with an easy flip of the wrist. Secondary wear panel protects primary bag from abrasion.



**TUFF DUTY**

**20" DEPTH ORDER CODE: CTTD**

Our toughest material withstands the most abuse without the need for an extra backing. Low drag traditional size mesh.



# CATCH-22 REPLACEMENT PARTS

Replacement bags slide quickly & easily over frame



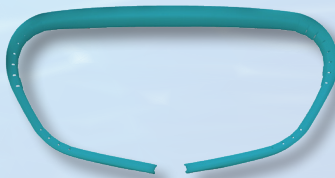
## Rag Bag

Soft, traditional black mesh  
Order Code: RNCTRB



## Tuff Duty Bag

Stiff, durable black mesh  
Order Code: RNCTTD



## CATCH-22 Leading Edge

Durable rim snaps on and off easily  
Order Code: LECT



## Enforcer

### Handle for CATCH-22

Order Code: RHCT

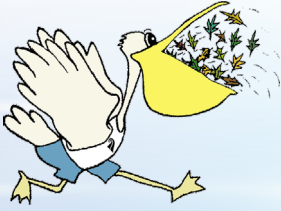


## Spring Lock

Top quality replacement  
fits most service tool handles

Order Code: SL

# PELICAN FEATHERWEIGHT



## Lightweight but strong!

Professional quality for residential use  
Ultra maneuverable and easy to use  
Bright color easily seen underwater  
16" Big mouth lightweight frame  
Four bag designs available  
(Standard & Skimmer shown)



### STANDARD\*

16" DEPTH ORDER CODE: PCSTD

Soft bag with traditional size mesh empties with an easy flip of the wrist. Blue bag provides excellent visibility underwater.



### LEAF CHASER

16" DEPTH ORDER CODE: PCLC

Low drag. 1/4 inch mesh bag collects leaves and other large debris without clogging.



### SILT

16" DEPTH ORDER CODE: PCSLT

Superfine mesh bag gets fine particles (pollen, tiny bugs, etc.) Deep bag holds in debris.



### SKIMMER

3" DEPTH ORDER CODE: PCSKM

The perfect replacement for unattractive, flimsy alternatives. Front and rear pocket design holds debris.

# PELICAN PRO

## Ultimate durability and maneuverability

All of the benefits of the Pelican shape  
but made for the professional  
18" Big mouth super strong frame  
Five bag designs available  
(Rag Bag & Skimmer shown)



**TUFF DUTY**

**20" DEPTH ORDER CODE: PPTD**

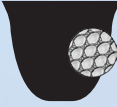
Our toughest material withstands the most abuse without the need for an extra backing. Low drag traditional size mesh.



**RAG BAG**

**20" DEPTH ORDER CODE: PPRB**

Soft bag with traditional size mesh empties with an easy flip of the wrist. Secondary wear panel protects primary bag from abrasion.



**LEAF CHASER**

**20" DEPTH ORDER CODE: PPLC**

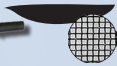
Low drag. 1/4 inch mesh bag collects leaves and other large debris without clogging. Secondary wear panel protects primary bag from abrasion.



**SILT**

**20" DEPTH ORDER CODE: PPSLT**

Superfine mesh bag gets fine particles (pollen, tiny bugs, etc.) Deep bag holds in debris. Secondary wear panel protects primary bag from abrasion.



**SKIMMER**

**3" DEPTH ORDER CODE: PPSKM**

The perfect replacement for unattractive, flimsy alternatives. Front and rear pocket design holds debris.

**LEADING EDGE** (replacement plastic rim) for Pelican Pro order code: **LEPP**

**RENEW KIT** (Leading Edge, bag, and Spring Lock) order code: (add 'RK' before order code of whole product (e.g. **RKPPTD** for ReNew Kit for Pelican Pro with Tuff Duty bag)

**SPRING LOCK** (Replacement handle clip) order code: **SL**



# PRO-LITE

Long-time favorite of the service professional

18" Wide super strong frame  
Four bag designs available  
(Silt bag shown)



## STANDARD

16" DEPTH ORDER CODE: PLSTD

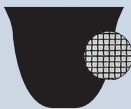
Standard mesh bag. Blue bag provides excellent visibility of collected debris.



## RAG BAG

20" DEPTH ORDER CODE: PLRB

Soft bag with traditional size mesh empties with an easy flip of the wrist. Secondary wear panel protects primary bag from abrasion.



## TUFF DUTY

20" DEPTH ORDER CODE: PLTD

Our toughest material withstands the most abuse without the need for an extra backing. Low drag traditional size mesh.



## SILT

20" DEPTH ORDER CODE: PLSLT

Superfine mesh bag gets fine particles (pollen, tiny bugs, etc.) Deep bag holds in debris. Secondary wear panel protects primary bag from abrasion.

**LEADING EDGE** (replacement plastic rim) for Pro-Lite order code: **LEPL**

**RENEW KIT** (Leading Edge, bag, and Spring Lock) order code: (add 'RK' before order code of whole product (e.g. **RKPLTD** for ReNew Kit for Pro-Lite with Tuff Duty bag)

**SPRING LOCK** (Replacement handle clip) order code: **SL**



# THE GENUINE **RED BARON**

**Our flagship product - Efficient and durable**

The gold standard among professionals

20" Wide super strong frame

Three bag designs available

(Tuff Duty shown)



**TUFF DUTY**

**20" DEPTH ORDER CODE: RBTD**

Our toughest material withstands the most abuse without the need for an extra backing. Low drag traditional size mesh.



**RAG BAG**

**20" DEPTH ORDER CODE: RBRB**

Soft bag with traditional size mesh empties with an easy flip of the wrist. Secondary wear panel protects primary bag from abrasion.



**LEAF CHASER**

**20" DEPTH ORDER CODE: RBLC**

Low drag. 1/4 inch mesh bag collects leaves and other large debris without clogging. Secondary wear panel protects primary bag from abrasion.

**LEADING EDGE** (replacement plastic rim) for Red Baron order code: **LERB**

**RENEW KIT** (Leading Edge, bag, and Spring Lock) order code: (add 'RK' before order code of whole product (e.g. **RKRBTD** for ReNew Kit for Red Baron with Tuff Duty bag)

**SPRING LOCK** (Replacement handle clip) order code: **SL**

# Gator



**THE Gator  
MAKES CLEANUPS  
A SNAP!**

## Fast and efficient for the big jobs

Ideal for commercial pools, ponds, & fountains.

Easy to maneuver and empty

24" Wide frame

Three bag designs available

(Leaf Chaser shown)



### TUFF DUTY

24" DEPTH ORDER CODE: GTTD

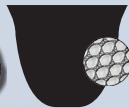
Our toughest material withstands the most abuse without the need for an extra backing. Low drag traditional size mesh.



### RAG BAG

24" DEPTH ORDER CODE: GTRB

Soft bag with traditional size mesh empties with an easy flip of the wrist. Secondary wear panel protects primary bag from abrasion.



### LEAF CHASER

24" DEPTH ORDER CODE: GTLC

Low drag. 1/4 inch mesh bag collects leaves and other large debris without clogging. Secondary wear panel protects primary bag from abrasion.

**LEADING EDGE** (replacement plastic rim) for Gator order code: **LEGT**

**RENEW KIT** (Leading Edge, bag, and Spring Lock) order code: (add 'RK' before order code of whole product (e.g. **RKGTTD** for ReNew Kit for Gator with Tuff Duty bag)

**SPRING LOCK** (Replacement handle clip) order code: **SL**



# TRASH COLLECTOR

## For the truly huge piles

22" Wide super strong frame

14" Open mouth design

26" Deep tapered bag

Only available with Leaf Chaser bag



ORDER CODE: TCLC

- Holds a large amount of debris
- Quick and easy to empty
- Surprisingly maneuverable
- Leaf Chaser bag for low drag
- Fills up quickly, which means fewer motions that would stir up debris

**LEADING EDGE** (replacement plastic rim) for Trash Collector order code: **LETC**

**RENEW KIT** (Leading Edge, bag, and Spring Lock) order code: **RKTCLC**

**SPRING LOCK** (Replacement handle clip) order code: **SL**

# SUPERRAKE 40

For seasonal clean-ups, ponds, commercial pools

40" Wide X 24" Deep

Replaces clumsy leaf vacuums

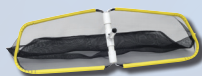
Easy to empty

Two bag designs available

(Tuff Duty shown)

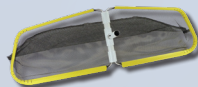


## Tuff Duty



Standard mesh bag makes child's play out of cleaning up after windstorms.  
40" W x 24" D **ORDER CODE: SR40TD**

## Leaf Chaser



1/4" Open mesh for easiest pulling action. Get leaves and debris quickly and easily with low drag.  
40" W x 24" D **ORDER CODE: SR40LC**

**RENEW KIT** (Leading Edge, bag, and Spring Lock) order code: (add 'RK' before order code of whole product (e.g. **RKSR40TD** for ReNew Kit for SuperRake 40 with Tuff Duty bag)  
**SPRING LOCK** (Replacement handle clip) order code: **SL**

# SKIMMERRAKE 48

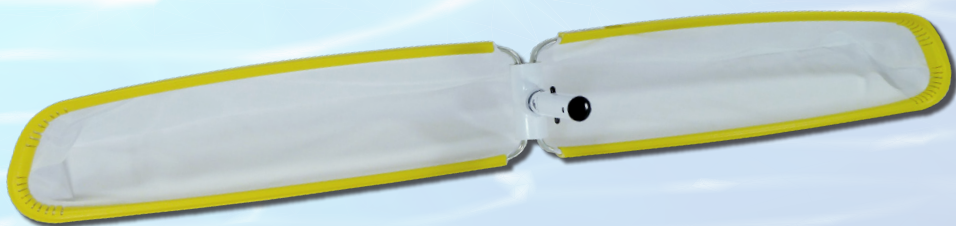
Great for large surface areas, ponds, fountains

48" Wide X 10" Deep

Easy pulling action

Two bag designs available

(Silt Bag shown)



## Silt

Superfine mesh net for complete surface skimming.

48" W x 10" D ORDER CODE: SKR48SLT



## Tuff Duty

Standard mesh bag speeds surface cleaning.

48" W x 10" D ORDER CODE: SKR48TD



**RENEW KIT** (Leading Edge, bag, and Spring Lock) order code: (add 'RK' before order code of whole product (e.g. **RKSKR48TD** for ReNew Kit for SkimmerRake 48 with Tuff Duty bag)  
**SPRING LOCK** (Replacement handle clip) order code: **SL**



## STAIN REMOVERS

The application of acid is the most effective way to remove many pool stains, and the number one solution for heavily stained pools is acid washing. What has been missing is a way to deal with these stains without taking the pool out of commission for days at a time or drastically affecting water chemistry. Purity Pool offers two efficient ways to deliver just the right amount of acid directly to the stain, with minimal or no dilution, and little affect on the pool chemistry. Use the Out Spot for routine removal of isolated stains, or the Underwater Acid Wash for large areas (including entire pools!) or for tougher stains.

## UNDERWATER ACID WASH

### One use pays for the tool

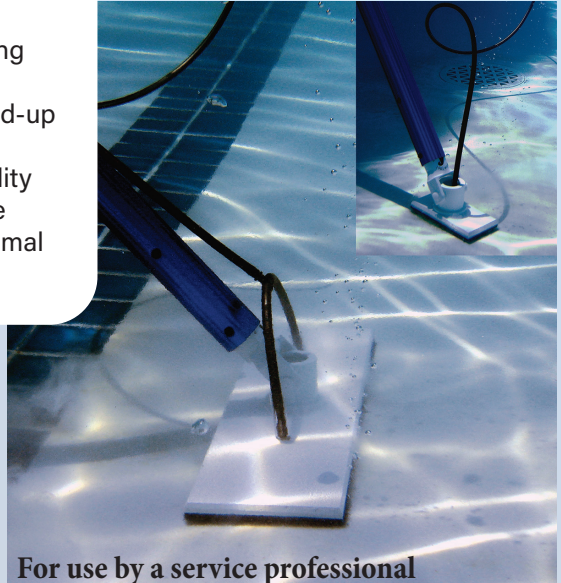
Includes 4" and 14" heads  
& a 25' quick siphon tube

ORDER CODE: UAW



### CONTINUOUS FEED SIPHON FOR TRUE ACID WASH RESULTS

- Removes spots and large stains without draining the pool
- As easy to use as a swimming pool vacuum
- Removes white calcium build-up on black or colored pools
- Complete acid wash capability
- Soaker pad makes complete contact with plaster for minimal effect to pool chemistry



For use by a service professional

# OUT SPOT

*The fastest, least expensive, and easiest way to remove small stains from swimming pools!*

- Chemical action quickly removes fresh rust spots and small stains in seconds
- Replaces harsh stones that gouge and produce unsightly scratches
- Protective of plaster
- Works for up to 20 minutes on a full reservoir of acid



**ORDER CODE: OS**

**new**

## IMPROVED DESIGN!

- Longer effective use time
- Better durability
- Easier to use



# TILE SCRUBBER

Available with quick connect or 5' pole

Double-thick soap-dispensing pad gets under cantilever decks and into tight corners  
Superfine, Fine and Coarse pads available



## Tile Scrubber with 5' Pole

Super durable lightweight pole  
Comes with fine grade pad  
**ORDER CODE: TSW5**

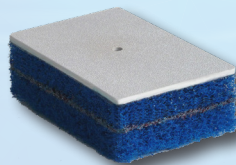
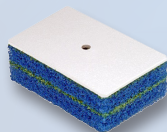


## Tile Scrubber Quick Connect

Same as above, but with standard pole connection  
Comes with fine grade pad  
**ORDER CODE: TSQC**

## RePad Fine

Blue fine grade pad  
Best for general use  
3" x 4"  
**Order Code: RPF**

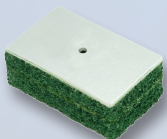


## Jumbo RePads

Now available in Superfine, Fine, and Coarse  
3 1/2" X 5 1/2"  
**ORDER CODES: JRPSF, JRPF, JRPC**

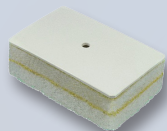
## RePad Coarse

Green coarse grade pad  
More abrasive for use on tough scale  
3" x 4"  
**ORDER CODE: RPC**



## RePad Superfine

White superfine grade pad  
3" x 4"  
**ORDER CODE: RPSF**



## Long Reach Extension

4 1/2" Extension piece makes easy work of reaching over custom rock features, etc. Includes extension piece, bolt, wingnut, rubber washer.  
**ORDER CODE: TSLR**





## NON CLOG BALL

### Skimmer enhancement

Leaf and debris strainer for skimmers without baskets. Fits over diverter valve or threads into skimmer fitting.

**ORDER CODE: NCB**



## WONDER WEIR

### Double-blade foam replacement weir

Works well even with very low suction. A must with automatic suction cleaners and multi-speed pumps. Available in sizes 8 3/8", 12" (easily trimmed)

**ORDER CODES: 83/8WW, 12WW**

